



ASIA-PACIFIC TELECOMMUNITY

**15th APT Policy and Regulatory Forum (PRF-15))
3-5 August 2015, Singapore**

**Document
PRF-15/INP-32**

3 August 2015

AT&T Global Network Services Hong Kong Limited

Global IoT Solutions: Societal Benefits and Business Models

Contact :

Tel:

Email:

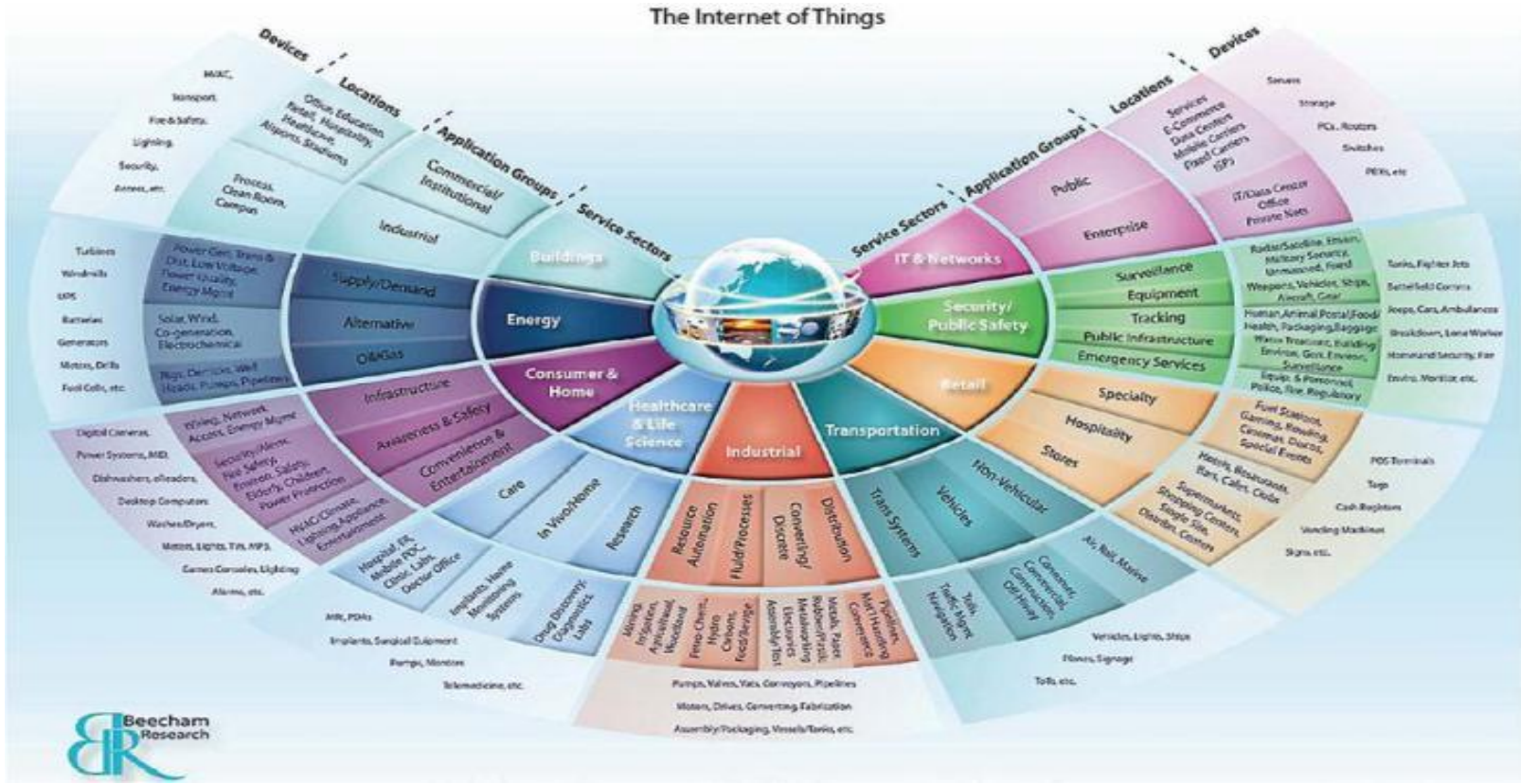
Global IoT Solutions: Societal Benefits and Business Models

APT Policy & Regulatory Forum August 2015

Chris Perera
Senior Director, International External Affairs
AT&T Asia Pacific



IoT Driving Innovation in Multiple Industries

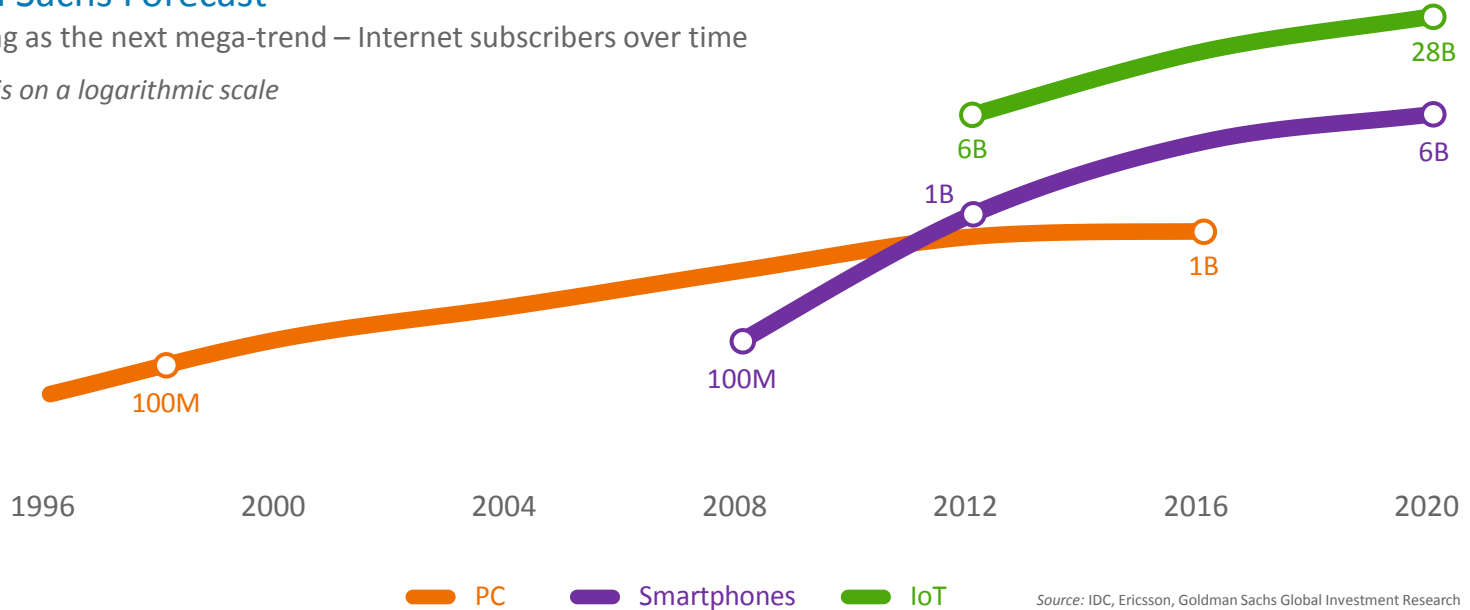


Billions of devices connected in the Internet of Things

Goldman Sachs Forecast

IoT emerging as the next mega-trend – Internet subscribers over time

Note: y-axis is on a logarithmic scale



Source: IDC, Ericsson, Goldman Sachs Global Investment Research



IoT and M2M Unlock New Business Value

Top 5 Reasons to Implement an IoT Strategy



Streamline operations



Reduce costs



Save time



Increase visibility



Increase or protect revenue



IoT Benefits: 1% savings from efficient IoT solutions could save billions in operational costs*

\$30B

fuel cost saving
in aviation
industry



\$66B

fuel cost saving
in gas powered
fleets



\$63B

productivity
improvement in
healthcare



\$90B

reduction in
Cap X in oil & gas
exploration and
development



\$27B

productivity
improvement in
rail industry



** Projected savings are based on 1% efficiencies/savings*

Source: Industrial Internet: Pushing the Boundaries of Minds and Machines, Peter C. Evans and Marco Annunziata, November 26, 2012



AT&T Industrial & Consumer IoT: Connecting people, processes and assets

Consumer IoT

- Stand alone assets
- Less time critical
- Human-centric



Industrial IoT

- Machine-to-Machine
- Mission critical assets
- Integrated control and information



AT&T investing in the leadership of IoT

The AT&T network has over 22 million M2M connected devices

The AT&T Single Global M2M SIM, delivers roaming access
in over 200 countries with over 500 carriers networks

GSM location tracking abilities in more than 100 countries

“AT&T Blows Away Connected Device Numbers in Q3 2014:”¹

“ . . . 3- 4 times that of the competition”

¹ James Brehm & Associates,
October 2014



Global Intermodal Container Tracking

- An Industrial IoT Solution enabled GPS location monitoring of containers moving across the globe and routes departing from major ports worldwide
- Monitor temperature of refrigerated container anywhere in the world from one central monitoring center.
- Solution - Container, Vessel System, Platform – Communication & Back End Application

Results

- Reduced labour costs
- Decreases losses
- Theft prevention
- Risk management and mitigation
- Audit efficiency



AT&T Cargo View

With FlightSafe[®]

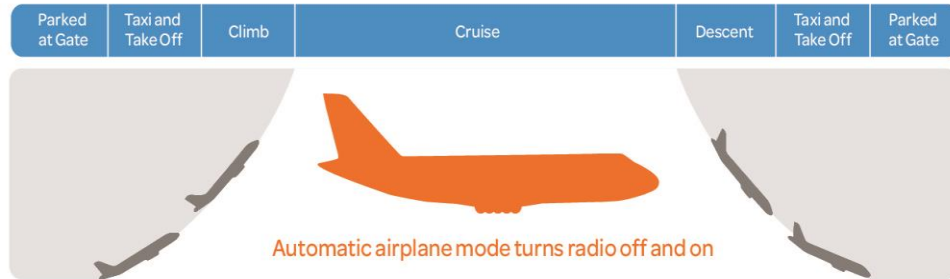


Cargo View – High Asset Cargo Monitoring Solution

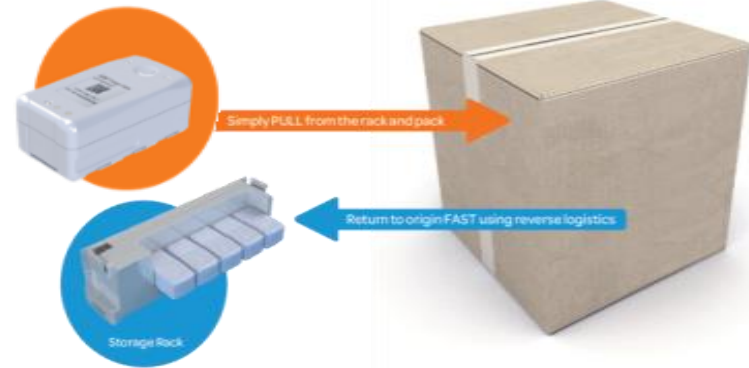
with FlightSafe®

23 million Tons of air cargo shipped annually representing **\$928 Billion** of Merchandise

25.8 million Mishandled bags **\$2.5B** Cost Annually



- Global near Real-Time Tracking & Monitoring Service
- AT&T Cloud-hosted & secured Cargo View application
- Automatic Airplane Mode with FAA Compliance
- Exclusive – certified by 23 Airlines
- Tracking on land or air



Uses Sensors to Detect:

- Location
- Pressure
- Light
- Temperature
- Shock



Rise of the Connected Machines & Data - *Going beyond Technology*

What do we need to consider

Business Model

Globalization

**Regulatory &
Compliance**

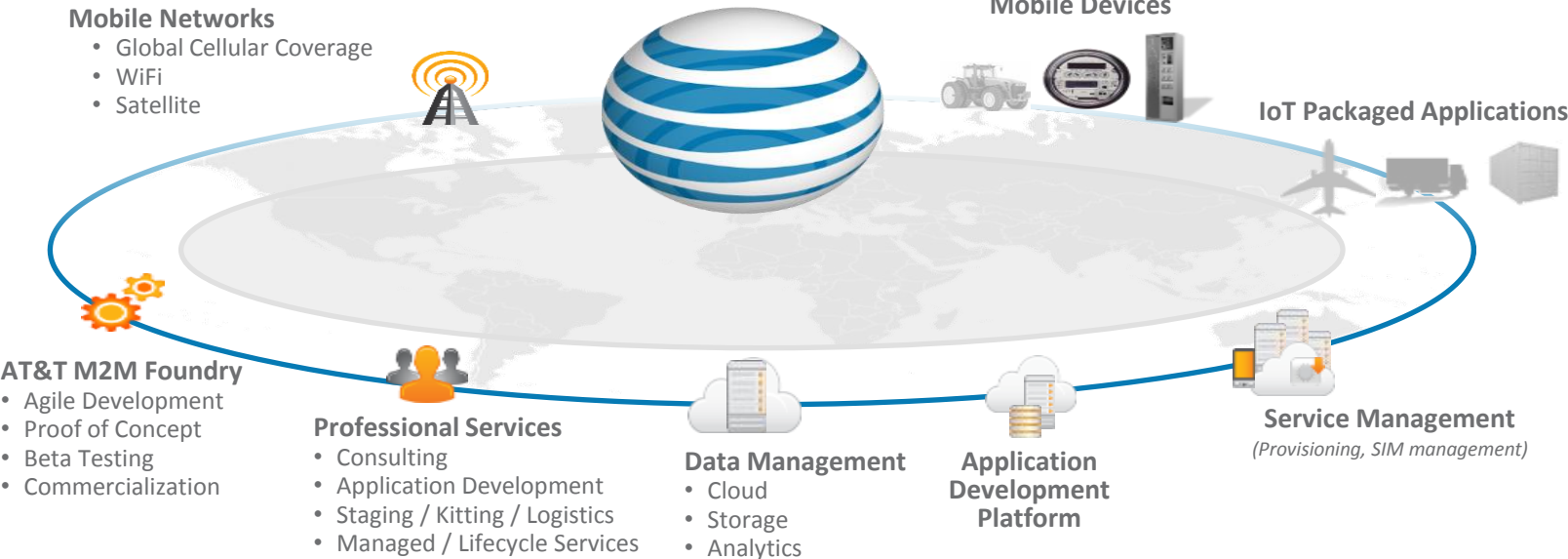
**Ecosystem
Strength**

Case Study

- **Biggest Growth inhibitors to the Industry & our business**
- **ROI Model**



Global IoT Integrated Solutions: More than Connectivity



Single SIM
that can operate
Globally

2,100+
Approved
Devices

22 Million
Devices on
network



Manufacturer Perspective:

IoT Platform Requirements for Economic and Operational Viability

Streamline Manufacturing

Embed single SIM in product.

Manufacturing site test for deployment anywhere in the world.



Global Distribution

Track device location and condition pre sale when shipped to and from warehouse.

Test before shipping.




Consistent Worldwide Operations

Build once, works everywhere

Automatically activate SIM and initiate billing upon sale.

Upgrade software and security on one platform worldwide.

Minimize points of vulnerability.

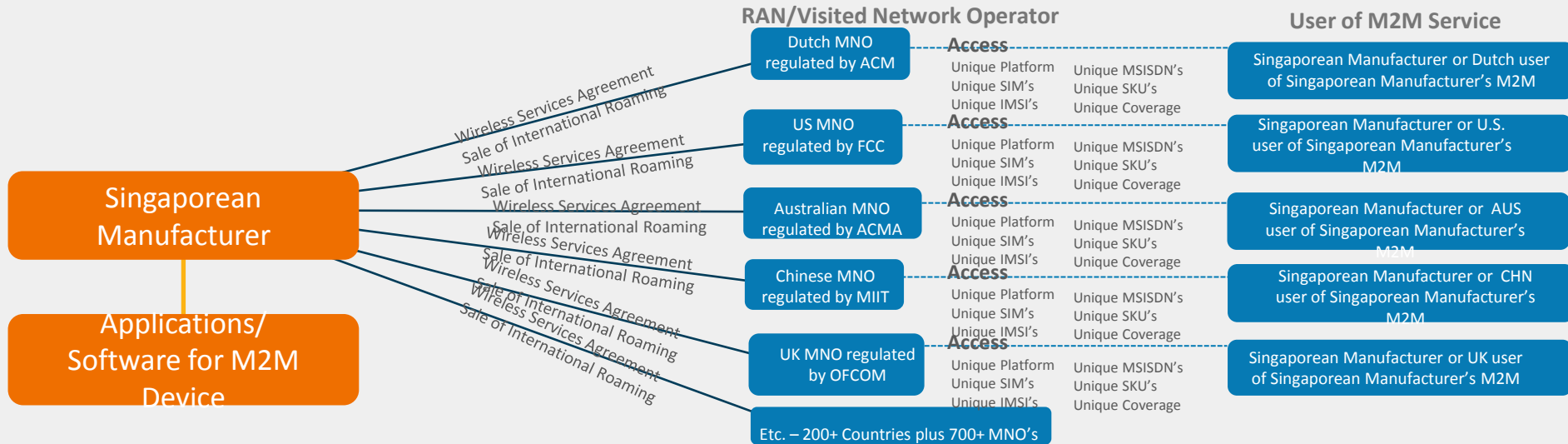
Manage through a single service device platform. 

Not Using International M2M Roaming

- Restriction on extraterritorial use of numbers would stifle M2M roaming
- Manufacturers would need to build between 200-700 platforms to have global coverage
- Each platform costs between \$500,000 to \$1 million

In Singapore

Outside Singapore



Using International M2M Roaming

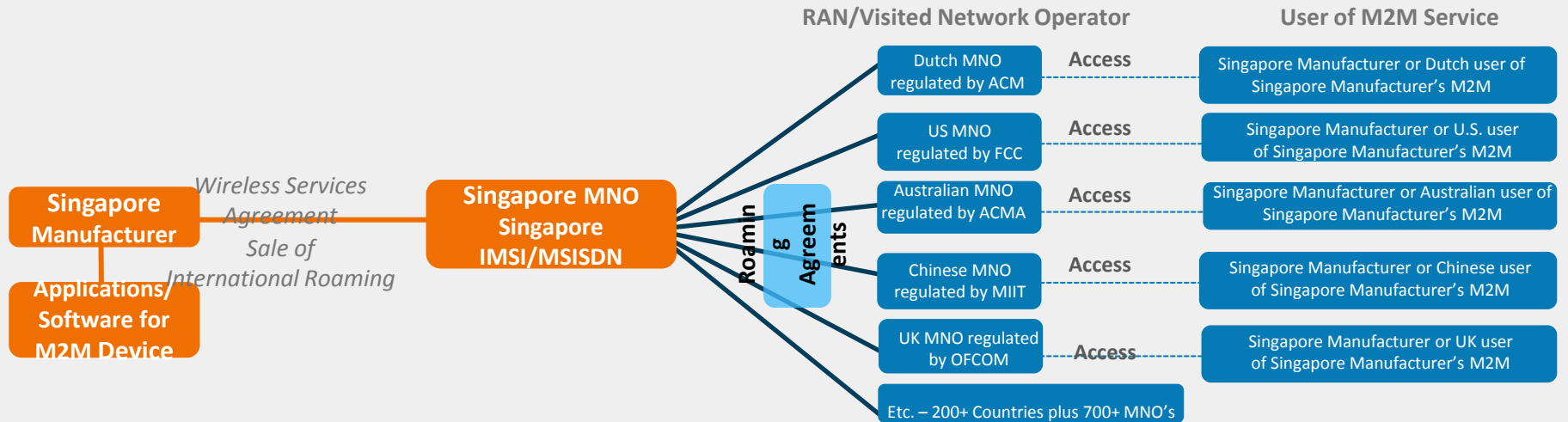
One agreement makes global expansion economically and logistically viable

Eases expansion and provides predictability

Critical for MNC and SME alike, both exporting and importing from Malaysia

In Singapore

Outside Singapore



Partner with us at the AT&T Foundry to merge industry expertise with leading technology

Thought Leadership

- Open and collaborative
- User-centric design
- Everything on wheels
- Built for innovation and speed
- Multiple locations:
 - Palo Alto, CA
 - Plano, TX
 - Atlanta, GA
 - Ra'anna, Israel



Thank you.

Chris.Perera@intl.att.com